

COVID-19 Infection



Discharge from A&E or GP consultation Patient advice leaflet



Information on COVID-19

What is COVID-19?

COVID-19 is an infectious disease caused by a newly discovered coronavirus strain that first emerged in China in December 2019.

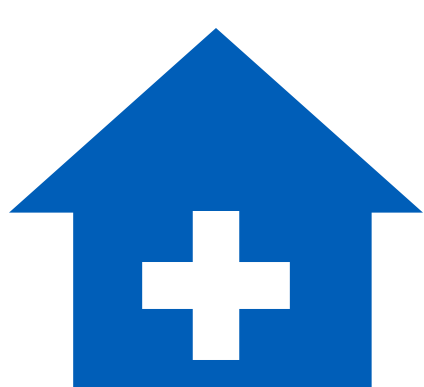
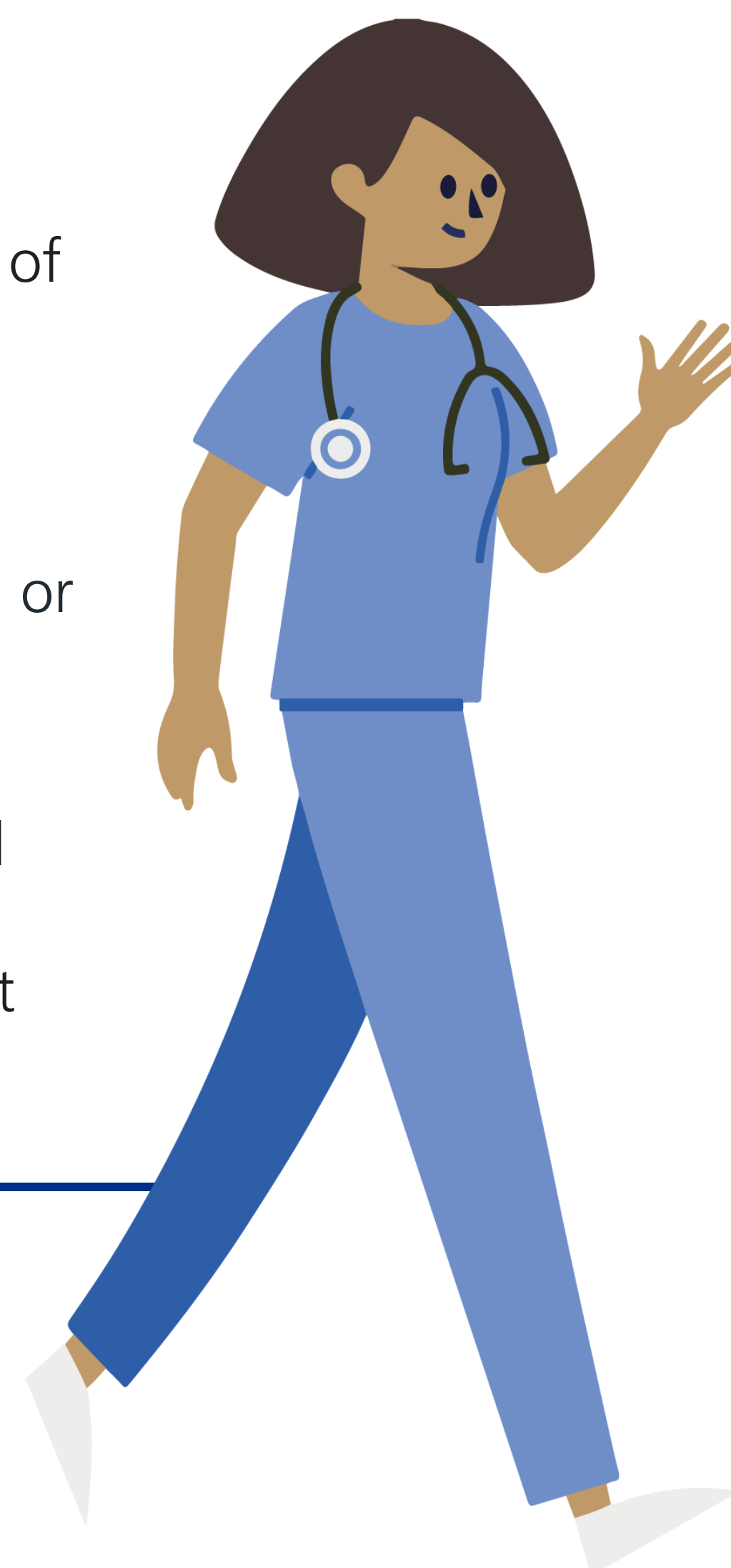
In humans, several coronaviruses are known to cause respiratory infections ranging from the common cold to more severe disease.

The new coronavirus outbreak (COVID-19) was declared a pandemic by the World Health Organisation on 11 March 2020.

The most important symptoms of coronavirus (COVID-19) are recent onset of any of the following:

- a new continuous cough
- a high temperature
- loss or change to your sense of smell or taste

For most people COVID-19 will be a mild illness. However if you have any of the symptoms listed you should self isolate at home.



After your visit to A&E or GP

You have been identified as having symptoms of COVID-19 infection

You need to go home and self isolate for seven days from the onset of your symptoms. If you live with others they need to isolate for 14 days from the onset of your illness. If anyone else in the household starts displaying symptoms, they need to stay at home for 7 days from when the symptoms appeared, regardless of what day they are on in the original 14 day isolation period.

What happens after my visit to A&E or my GP?

At this point you are considered well enough to manage your symptoms at home. You will have been prescribed medication if required. If you did not require any prescribed medication then you should be able to manage your symptoms yourself. Ensure you stay hydrated and take paracetamol if you have a temperature. To aid recovery, try to avoid spending long periods of time lying flat in bed, trying sitting up or in a chair, or moving around at home.

You may have a cough or feel tired or breathless for several weeks despite the COVID-19 having cleared, however if the symptoms persist please call your GP for a review.

If you are still struggling to manage your symptoms at home, or your condition gets worse please contact:



Your care team may wish to give you some specific guidance below:



Useful Contact Numbers

Palliative Services 01942 822 008
Bereavement Support 01942 773548
Chaplaincy Services 01942 822324 or 01942 822314

For a medical emergency, dial 999 immediately

COVID-19 Infection



Discharge from A&E or GP consultation Patient advice leaflet



When you get home

Can I spread COVID-19 to friends and family?

There is a risk that other members of your household or others that you have been in close contact with over the previous 2 weeks have been exposed to the virus but it is possible that they have not. Therefore each of you should follow the government's isolation guidance:

<https://www.gov.uk/government/publications/covid-19-stay-at-home-guidance/stay-at-home-guidance-for-households-with-possible-coronavirus-covid-19-infection>

Please continue to monitor this guidance as it is updated regularly as more evidence becomes available. This will ensure you have the most up to date information on when it is safe to end your self-isolation (and household isolation if you live with others).

Please note that a persistent cough alone does not mean someone must continue to self-isolate beyond the duration advised by the government.

Can I get COVID-19 again?

If you have tested positive for COVID-19, you will probably have developed some short term immunity to coronavirus. However, if another person in your household develops symptoms and they have not previously tested positive, then they need to isolate along with all other members of the household except for you.

Do I need to wear a facemask?

You may be issued with a mask to wear as you travel home. Find the latest guidance regarding face masks here:

<https://www.gov.uk/government/publications/staying-safe-outside-your-home>

What if I feel unwell again?

Monitor your symptoms regularly and if you have any concerns go to:

<https://www.nhs.uk/conditions/coronavirus-covid-19/check-if-you-have-coronavirus-symptoms/>



Protecting yourself and others from coronavirus



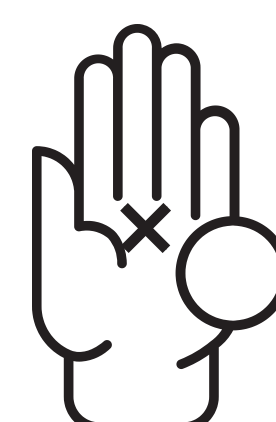
Wash your hands

frequently and thoroughly, for at least 20 seconds. Use alcohol-based hand sanitizer if soap and water aren't available.



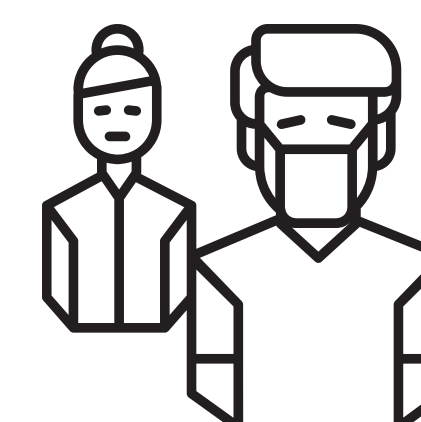
Cover your mouth and nose

with a tissue when you cough or sneeze and then throw the tissue in the bin and wash your hands. Alternatively, cough or sneeze into your elbow



Avoid touching

your eyes, nose and mouth with unwashed hands



Avoid close contact

with people who are sick, sneezing or coughing.