

Cervical Spondylosis

Patient Information

Musculoskeletal (MSK) Physiotherapy Department

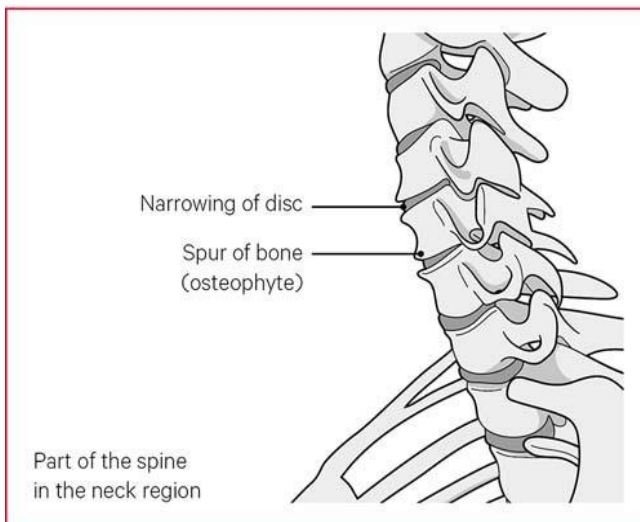
Author ID: AYC
Leaflet Number: Musc 071
Version: 2
Name of Leaflet: Cervical Spondylosis
Date Produced: September 2023
Expiry Date: September 2025

Cervical Spondylosis - What is it?

Osteoarthritic changes in the neck are commonly known by the term cervical spondylosis. It is common and is result of the natural aging process. This age-related change can make the space between the discs and joints of the neck narrower.

The body tries to repair this process by the formation of small growths of extra bone (spurs) at the edge of the joints and vertebrae. All these changes may be seen on an X-ray, but this does not mean it is always the cause of your symptoms.

Cervical spondylosis



Does this mean I will always have pain?

Almost everyone will have spondylosis at some point in their life, but often it doesn't cause any pain at all, nor does it affect everyday lives.

Spondylosis may increase your chances of having neck pain, but if you do regular exercise, look after your general wellbeing and seek advice from a healthcare professional then any symptoms you experience can be improved and managed.

Symptoms

Occasionally you may feel:

- Local pain
- Pain in your arm(s)
- Stiffness
- Numbness and tingling which may be caused by a nerve being irritated or pinched
- Headaches

Treatment

Try to go about your normal daily routine.

Avoid being in the same position regularly, as static postures for long periods may make your symptoms worse.

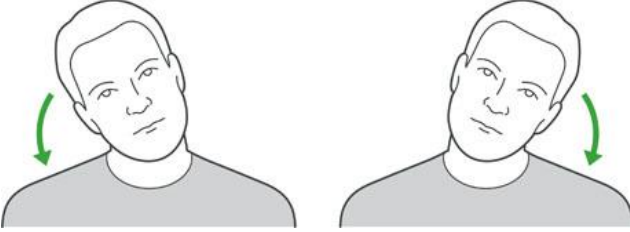
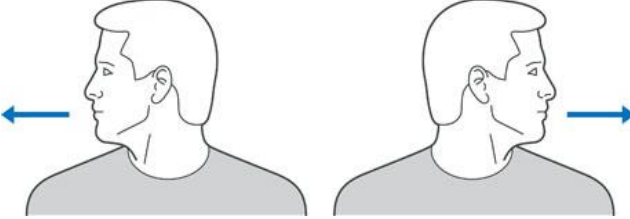
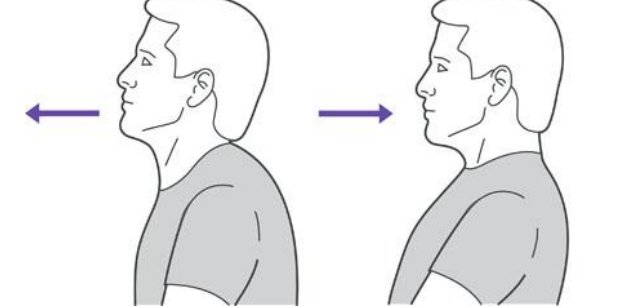

Start the neck and shoulder exercises seen in this booklet. If symptoms persist seek advice from your physiotherapist or doctor.

Off-the-shelf pain relief may be enough to ease your pain; if not, or you are unsure what to take, seek extra advice from your doctor.

Use of heat, such as heated wheat bags, over your area of discomfort can be useful. There is no right or wrong position for sleep, aim to find whatever is comfortable for you.

Range of motion exercises:

Stretching will need to be done daily for better results. The below exercises can be performed in standing or sitting.

	<p>Side Flexion stretch</p> <p>Tilt your head to the side. Hold for 10 seconds.</p> <p>Repeat to the opposite side.</p> <p>Complete 3 sets each side.</p>
	<p>Rotation</p> <p>Turn your head to the side. Hold for 5 seconds.</p> <p>Repeat to the opposite side.</p> <p>Complete 5 times both sides.</p>
	<p>Chin tuck</p> <p>Poke your chin forward until you feel a stretch in your throat.</p> <p>Drag your chin backward until you feel it cannot go any further.</p> <p>Hold for 5 seconds.</p> <p>Complete 5 times.</p>
	<p>Flexion stretch</p> <p>Tilt your head and chin down toward your chest.</p> <p>Hold for 5 seconds.</p> <p>Complete 5 times.</p>

Comments, Compliments or Complaints

The Patient Relations/Patient Advice and Liaison Service (PALS) Department provides confidential on the spot advice, information and support to patients, relatives, friends and carers.

Contact Us

Tel: 01942 822376 (Monday to Friday 9am to 4pm)

The Patient Relations/PALS Manager
Wrightington, Wigan and Leigh Teaching Hospitals NHS Foundation Trust
Royal Albert Edward Infirmary
Wigan Lane
Wigan WN1 2NN

Ask 3 Questions

Become more involved in decisions about your healthcare. You may be asked to make choices about your treatment. To begin with, try to make sure you get the answers to three key questions:

1. What are my options?
2. What are the pros and cons of each option for me?
3. How do I get support to help me make a decision that is right for me?



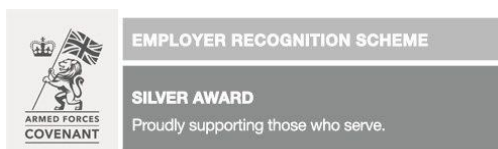
How We Use Your Information

For details on how we collect, use and store the information we hold about you, please take a look at our “how we use your information” leaflet which can be found on the Trust website: <https://www.wwl.nhs.uk>

This leaflet is also available in audio, large print, Braille and other languages upon request. For more information please ask in the department/ward.

© Wrightington, Wigan and Leigh Teaching Hospitals NHS Foundation Trust
All rights reserved. Not to be reproduced in whole or in part without the permission of the copyright owner.

Call 111 first when it's less urgent than 999.



Phone: 0808 802 1212
Text: 81212
www.veteransgateway.org.uk

