

# Clavicle Fracture (adult)

## Patient Information

Trauma & Orthopaedic Department



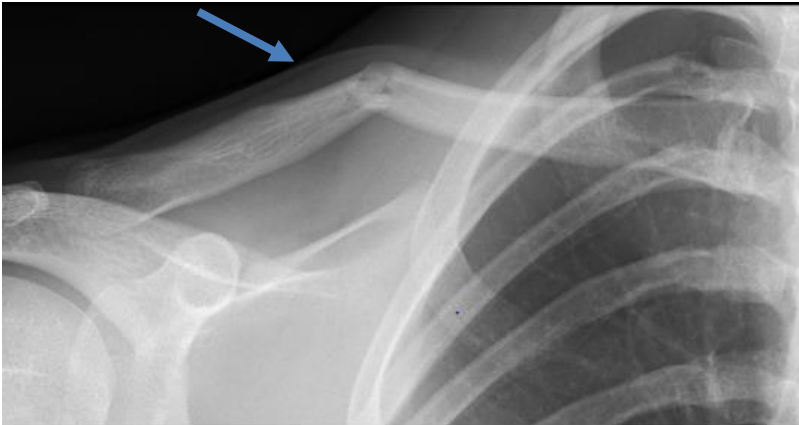
The Patient Information Leaflets page on the Trust website is available on the link:  
<https://www.wwl.nhs.uk/patient-information-leaflets> or scan the QR code.

Author ID:	VL
Leaflet Ref:	Phy 079
Version:	1
Leaflet title:	Clavicle Fracture (Adult) v1
Last review:	March 2024
Expiry Date:	March 2026



## Introduction

A fractured clavicle (broken collarbone) is a common injury. This fracture usually takes around 6 weeks to heal.



## Symptoms

Often very painful; other symptoms can include:

- Swelling or tenderness around the injured area
- Bruising to the skin
- A visible lump at the fracture site.

The shoulder may appear slumped. This is due to the broken collarbone no longer providing support to the weight of the arm.

## Recovery

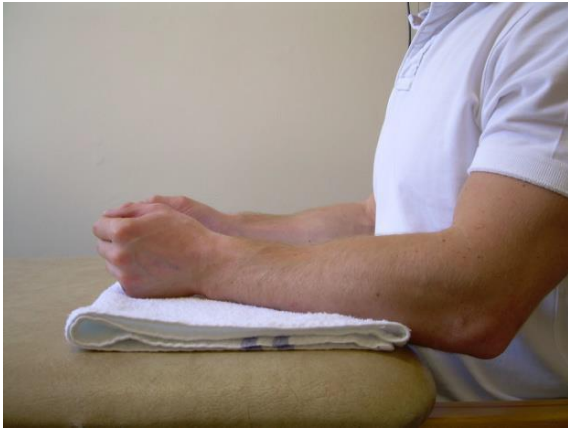
Collarbone breaks often heal naturally, using a simple sling for support for 2 to 6 weeks. The sling can then be removed, and the arm used as pain allows. Take the arm out of the sling several times a day to straighten the elbow.

- Take simple painkillers e.g. paracetamol for as long as you need to; do not take more than the recommended dose. Your local pharmacist is a useful source for pain relief information.
- Smoking slows down healing. We advise you to stop. Please talk to your General Practitioner (GP) or go online at <https://www.nhs.uk/smokefree>
- It may be more comfortable to sleep sitting upright; this can be done using extra pillows.

## Exercise

Aim to get the shoulder moving as soon as possible. Try raising the arm to the chest height if you can. By week 6 you should be able to reach your hands above your shoulders. Maybe start with the table slides exercise below.

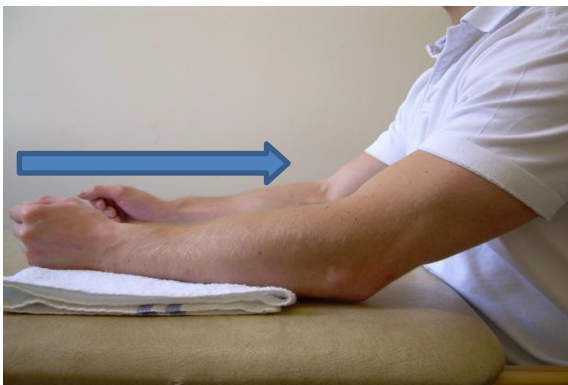
## Table Slides



- Sit at a table or stand at the kitchen work-top
- Rest your hands on a towel (with your palms facing inwards).



- Watching your elbow crease, slide the towel forwards with both hands
- Only go forwards whilst your elbow is moving
- Pause.



- Return by sliding your elbows and hands back, watching the crease
- As you feel more comfortable, as you pull your elbows back towards you, you can lean your body forwards over your elbows. This will help them bend further.

## Things to expect

During the healing process, the body forms new bone (callus) around the fracture site. A lump/bump may develop over the collarbone. Please do not be alarmed, this is a normal part of the healing process and may remain forever.

## Disclaimer

Not all exercises are suitable for everyone, and while every precaution has been taken in selecting these exercises, they do not come without risks. If you have any concerns regarding your injury, or whether you should partake in the exercises, then you should consult your GP or Physiotherapist before beginning any exercises in this leaflet.

It is quite normal to feel some discomfort following exercise, but it is important that this discomfort eases within 2 hours of finishing the exercise and does not have an overall negative effect on your symptoms.

The exercise plans shown in this leaflet are designed to be used as a guide and a point of reference; they can be modified and progressed under the supervision of your Physiotherapist.

## Frequently asked questions

### Driving

You must not drive with a sling on. It is your own responsibility to ensure this. You are allowed to drive when:

- You can safely control the car
- You can use the steering wheel/gear stick safely
- You can perform an emergency stop.

### Work

This depends on your individual situation. You can return to work when you feel able to do your job. Consider a phased return where needed/possible.

### Sports

You should not play sport until you are pain-free and have full movement in your shoulder.

## Further Advice

If you have any concerns regarding your shoulder, contact:

**Fracture Clinic Helpline: 01942 822595** please leave a message with your name, telephone number and a brief description of the reason for call your call, and we will aim to call you back within 24 hours Monday to Friday 8.30am until 5pm (please note it will be Monday if you call over the weekend).

If you have any urgent concerns out of hours, please call 111.

## Adult MSK Physiotherapy Self-Referral

If you are struggling to regain your movement or get back to normal activities, you can self-refer to **Physiotherapy**. A referral form can be found on this webpage:

<https://www.wvl.nhs.uk/adult-msk-physiotherapy-self-referral>



Please scan the QR Code to access the website.

### Telephone Numbers:

**Boston House Health Centre** Telephone 03007071113

**Leigh Infirmary** Telephone 03007071597 / 03007071595

**Platt Bridge Health Centre** Telephone 03007071772

---

## Comments, Compliments or Complaints

The Patient Relations/Patient Advice and Liaison Service (PALS) Department provides confidential on the spot advice, information and support to patients, relatives, friends, and carers.

## Contact Us

Tel: 01942 822376 (Monday to Friday 9am until 4pm)

The Patient Relations/PALS Manager  
Wrightington, Wigan and Leigh Teaching Hospitals NHS Foundation Trust  
Royal Albert Edward Infirmary  
Wigan Lane  
Wigan  
WN1 2NN

---

## Ask 3 Questions

Become more involved in decisions about your healthcare. You may be asked to make choices about your treatment. To begin with, try to make sure you get the answers to three key questions:

1. What are my options?
2. What are the positives and negatives of each option for me?
3. How do I get support to help me make a decision that is right for me?



---

## How We Use Your Information

For details on how we collect, use, and store the information we hold about you, please see patient information leaflet, Ref. **Corp 006** How we use your information, this can be found on the Patient Information Leaflets page on the Trust website, see details on the front cover.

This leaflet is also available in audio, large print, Braille, and other languages upon request. For more information, please ask in the department/ward.

---

© Wrightington, Wigan and Leigh Teaching Hospitals NHS Foundation Trust.  
All rights reserved. Not to be reproduced in whole or in part without the permission of the copyright owner.

**Call 111 first when it's less urgent than 999.**



EMPLOYER RECOGNITION SCHEME

GOLD AWARD 2021

*Proudly serving those who serve.*

Phone: 0808 802 1212

Text: 81212

[www.veteransgateway.org.uk](http://www.veteransgateway.org.uk)

