

# Blood tests (Children under 12 years)

## Patient Information

Children's Community Nursing Team



The Patient Information Leaflets page on the Trust website is available on the link:  
<https://www.wvl.nhs.uk/patient-information-leaflets> or scan the QR code.

Author ID: NS/TJ  
Leaflet ref: CM 262  
Version: 4  
Leaflet title: Blood tests (Children under 12 years)  
Last review: June 2024  
Expiry date: June 2026

## What you need to know

The Children's Community Nursing Team (CCNT) provides clinics in the Wigan Borough for children under the age of 12 years who have been referred for a blood test by a General Practitioner (GP) or other health professionals. We provide clinics in Leigh, Pemberton and Lower Ince.



## Fasting information

If fasting is required prior to the blood test, your child's GP or referrer will advise you how long they should fast for. Please inform staff of this when booking the appointment.

## Clinic availability

We provide morning and afternoon clinics in different locations across the borough, these will be discussed when you make your appointment.

## Important information

Appointments are booked up quickly so please bear this in mind when booking your appointment. We will try our best to arrange a convenient appointment for you.

**Please see overleaf for how to apply local anaesthetic cream prior to a blood test.**

**To book a blood test please telephone 0300 707 7700**

**Please note priority blood tests can only be arranged with a referral request sent from your General Practitioner directly to the administration hub via:**

**[wwl-tr.ashtonics@nhs.net](mailto:wwl-tr.ashtonics@nhs.net)**

## Local Community Pharmacy

Your local community pharmacies offer a wide range of services including information and general advice on symptom relief medicines as well as a prescription collection and delivery service.

## How to apply local anaesthetic cream prior to your child's blood test

1

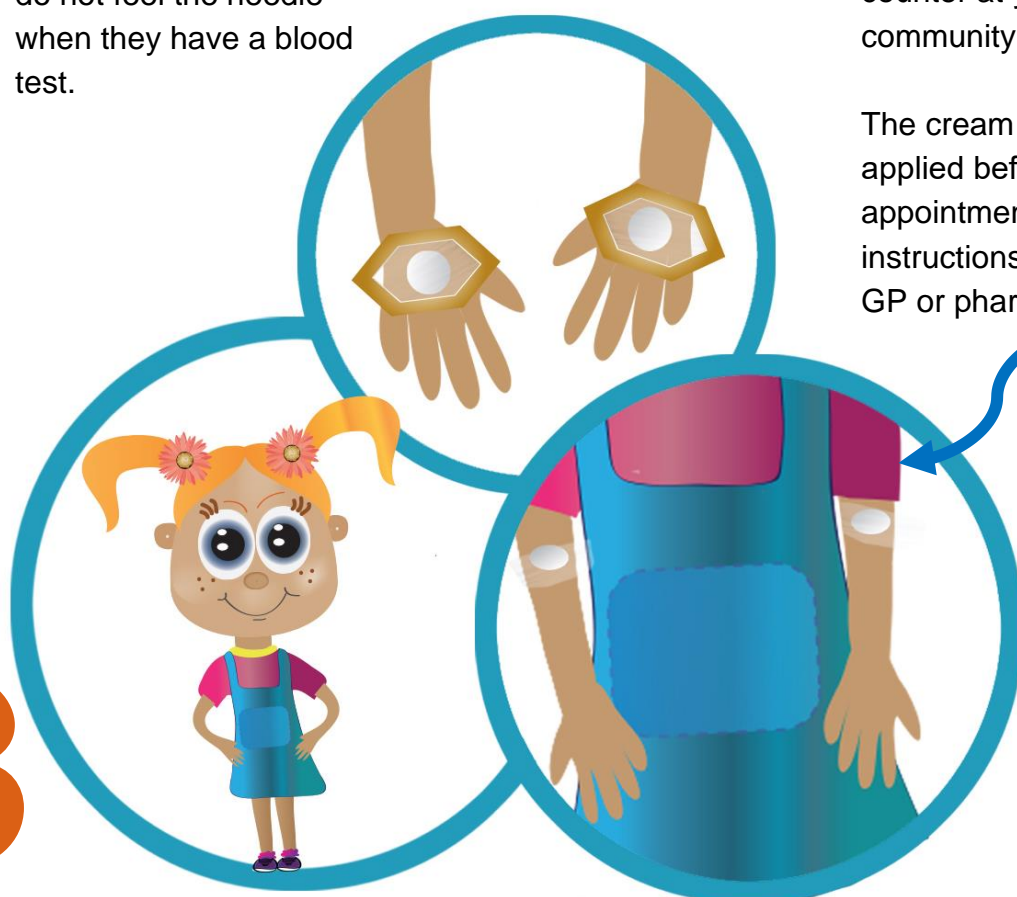
Local anaesthetic cream can be used to help numb your child's skin, so they do not feel the needle when they have a blood test.

2

You can request a prescription or buy local anaesthetic cream over the counter at your local community pharmacy.

The cream will need to be applied before your child's appointment. Please follow instructions from your GP or pharmacist.

3



4

The local anaesthetic cream will need to be applied to four areas of your child's skin: the inside creases of both elbows and the back of each hand. Please see the diagram above.

Please do not rub the cream in once you have applied a small amount to the four areas of your child's skin. Once the cream has been applied you can loosely wrap cling film over the area. You may be given special plasters to use instead of cling film. The nurse will remove the cling film and any plasters at the appointment.

**Please seek medical advice from your GP if you or your child experiences any sensation or reaction to the local anaesthetic cream.**

### Acknowledgement

Animations designed by Jayde Melling.

---

## Comments, Compliments or Complaints

The Patient Relations/Patient Advice and Liaison Service (PALS) Department provides confidential on the spot advice, information and support to patients, relatives, friends, and carers.

## Contact Us

Tel: 01942 822376 (Monday to Friday 9am until 4pm)

The Patient Relations/PALS Manager  
Wrightington, Wigan and Leigh Teaching Hospitals NHS Foundation Trust  
Royal Albert Edward Infirmary  
Wigan Lane  
Wigan  
WN1 2NN

---

## Ask 3 Questions

Become more involved in decisions about your healthcare. You may be asked to make choices about your treatment. To begin with, try to make sure you get the answers to three key questions:

1. What are my options?
2. What are the positives and negatives of each option for me?
3. How do I get support to help me make a decision that is right for me?



---

## How We Use Your Information

For details on how we collect, use, and store the information we hold about you, please see patient information leaflet, Ref. **Corp 006** How we use your information, this can be found on the Patient Information Leaflets page on the Trust website, see details on the front cover.

---

This leaflet is also available in audio, large print, Braille, and other languages upon request. For more information, please ask in the department/ward.

---

© Wrightington, Wigan and Leigh Teaching Hospitals NHS Foundation Trust.  
All rights reserved. Not to be reproduced in whole or in part without the permission of the copyright owner.

**Call 111 first when it's less urgent than 999.**



EMPLOYER RECOGNITION SCHEME

GOLD AWARD 2021

*Proudly serving those who serve.*

Phone: 0808 802 1212

Text: 81212

[www.veteransgateway.org.uk](http://www.veteransgateway.org.uk)

